

HDD TOOLS & ACCESSORIES



**Aerial or
Burial: Over
or Under,
We've Got
You Covered!**



**GEORGIA
UNDERGROUND
SUPERSTORE**



Georgia Underground Superstore has built a unique business around the special needs of utility contractors like you. We are committed to maintaining a unique product mix so we can be your “one-stop shop” for both your equipment and supply needs.

We look forward to earning your business by:

- Stocking the products we carry so they are available when you need them
- Offering quality products from leading manufacturers
- Repairing and servicing the products we sell
- Shipping your orders quickly—anywhere in the United States and beyond
- Maintaining a **knowledgeable staff** that understands the **utility construction business**

Our 31,000 sq. ft. Dallas, TX warehouse allows us to reach and serve our national clientele.

The GUS Superstore Staff knows the business and can show you the latest products available.

The GUS Superstores feature large show rooms. They're still growing!

Our 61,000 sq. ft. Atlanta warehouse stocks the product you need. A complete shop facility is designed to meet your service and repair needs.

HDD/Directional Drilling Products

Drill Pipe	4
Paddle Bits	5
Collars.	6
Starter Rods	6
Railhead	6
Sonde Housings	7
Back Reamers and Hole Openers	7
Drive Chucks and Sub-Savers	11
Jaw Dies and Inserts	12
Carbide Replacement Bits	12
Rod Wipers and Guide Blocks	13
Rubber Tracks	13
Swivels, Pulling Eyes and Pulling Harnesses.	14
Bentonite and Drilling Fluids	28
Drill Stem Grease	30
Locator Batteries.	31

HDD/Directional Drilling Products

Drill Pipe

GUS offers horizontal directional drilling pipe for Ditch Witch®, Vermeer®, and Case®/Davis®/Astec® drill rigs. We currently carry drill pipe manufactured by Hunting and Premier Drill Pipe Ltd.

Ditch Witch Style Drill Pipe

- Fully compatible with Jet-Trac® handling equipment.
- Many popular sizes available in both forged-end and inertia welded rods.
- Rods available for the following models: 100, 820, 920, 920L, 922, 1220, 1720, 1720V, 2020, 2720V, 2720M1, 3020M1, 4020, 4020M1, 7020 and 8020.



Vermeer Style Drill Pipe

- Fully compatible with with Vermeer handling equipment.
- Rods available for the following models: D6X6, D7X11, D10X15, D16X20, D18X22, D20X22, D24X26, D24X33, D24X40, D33X44, D36X50, D40X40, D50X100, D55X100, D80X100, and D100X120.



Case, Davis, ASTEC Style Drill Pipe

- Rods available for the following models: Case 6010 and Case 6030.

Paddle Bits

GUS carries a number of horizontal directional drilling paddle bits for Ditch Witch and Vermeer® drill rigs. Below are just a few of the paddle bits we carry:



Chevron Carbide Bit

Designed for tougher drilling conditions in medium hard formations such as caliche and shale.



Carbide Finger Bit

Carbide hardfaced fingers heat treated for long life and faster penetration in clay, sand and soil. Fingers peel clay where conventional cutters ball up.



Extreme Steep Taper Cobble Bit.

Good in hard soils, soft rock and some medium rock formations. It is designed for better penetration.



Tuff Bit

Well suited for clay, sand, soils and soft rock formations.



Hard Face Bit

Medium and hard formations.



Power Point Bit

Good in soft rock and some medium rock formations.

Hard Face Collars

Ditch Witch Style Collars

- Collars available for the following models: 520, 920, 1220, 1720, 2020, 2720, 2720M1, 3020, 4020 and 40M1.

Vermeer Style Collars

- Collars available for the following models: D7X11, D10X15, D16X20, D18X22, and D24X40.



Starter Rods

Ditch Witch Style Starter Rods

- Starter Rods available for the following models: 520, 920, 922, 1220, 1720, 2020, 2720, 2720M1, 3020, 4020, and 4020M1

Vermeer Style Starter Rods

- Starter Rods available for the following models: D6X6, D7X11, D10X15, D16X20, D18X22, D20X22, D24X26, D24X40, D33X44, and D36X50.



Case, Davis, ASTEC Style Starter Rods

- Starter Rods available for the following model: Case 6030.

Railhead

Railhead Underground Products, LLC is the leading manufacturer of the world's best quality drilling tools for the horizontal drilling industry.

Railhead products are built tough and fit all major brands of mini-HDD machines on the market.

Georgia Underground carries Railhead Directbore Tooling and Railhead products for the following brands:

Ditch Witch Style

- 100, 920, 920L, 921, 922, 1220M1, 1720, 1720M1, 2020M1, 2720, 2720M1, 2720AT, 3020M1, 4020, 4020M1, 4020AT, 7020 and 8020.

Vermeer Style

- D7X11, D7X11A, D9x13, D10X15, D16X20, D16X20A, D18X22, D20X22, D24X40, D33X44, D36X50, D40X40, D50X100, D80X100, D80X120, and D100X120.

Case, Davis, ASTEC Style

- DD1, DD 3, DD4, DD6, DD8, DD10, DD 140, DD1215, DD 2024, DD3238, Case 6010, and Case 6030.

Straightline Style

- Straightline 2020.



Sonde Housings

Ditch Witch Style Sonde Housings

- Sonde Housings available for the following models: 520, JT 25, 920, 920L, 1220, 1720, 2020, 2720, 2720M1, 3020M1, and 4020M1.

Vermeer Style Sonde Housings

- Sonde Housings available for the following models: D7X11, D10X15, D16X20, D24X46, D24X40 and D40x40.



Back Reamers and Hole Openers

We can help you choose the best reamer for your soil conditions and your machine. We have too many connections to list. Adapters are sold separately to fit your specific machine. Variables to consider are:

- What thread do you have?
- What teeth would you like?
- Are you using a swivel or a pull tab?

Let us know which reamer we can build for you today. Contact us and let's get started!

Armadillo Reamer

Designed for use in: sandstone, soft limestone, shale, caliche, glacial till, cobble, gravel, packed clays, and compacted soils.

Options: teeth, length of body, pulling eye, thread connection or built-in swivel on product end.

Ditch Witch Models: 1720, 1720M1, 2720, 27M1, 3020M1, 4020, 4020M1, 7020, 8020, JT100

Vermeer Models: 18x22, 20x22, 24x26, 24x33, 24x40, 33x44, 40x44, 36x50, 55x100, 80x100, 100x120, 120x180

Astec/Case Models: 2024, 3238, 6010, 6030

American Augers Models: DD6, DD10, DD220T, DD440, DD440T, DD625, DD1100, DD1100RS

Straightline Models: SL2020

Badger Reamer or Three Wing Rock Reamer

Designed for use in: hard pan and caliche

Options: carbide embedding on compaction surface; with or without nozzles on blades

Ditch Witch Models: 920, 921, 922, 1220, 1720, 1720M1, 2720

Vermeer Models: 6x6, 7x11, 9x15, 10x15, 16x20, 18x22, 20x22, 24x26, 24x33, 24x40, 40x40, 33x44, 36x50, 55x100, 80x100, 100x120, 120x180



Astec/Case Models: 2024, 3238, 6010, 6030

American Augers Models: DD6, DD10, DD220T, DD440, DD440T, DD625, DD1100, DD1100RS

Straightline Models: SL2020

Barrel Reamer

Ditch Witch Models: 920, 921, 922, 1220, 1720, 1720M1, 2720, 27M1, 3020M1, 4020, 4020M1, 7020, 8020, JT100

Vermeer Models: 6x6, 7x11, 9x15, 10x15, 16x20, 18x22, 20x22, 24x26, 24x33, 24x40, 40x40, 33x44, 36x50, 55x100, 80x100, 100x120, 120x180



Astec/Case Models: 2024, 3238, 6010, 6030

American Augers Models: DD6, DD10, DD220T, DD440, DD440T, DD625, DD1100, DD1100RS

Straightline Models: SL2020

Beavertail Reamer or Clay Whipper Reamer

Ditch Witch Models: 920, 921, 922, 1220, 1720, 1720M1, 2720, 27M1, 3020M1, 4020, 4020M1, 7020, 8020, JT100

Vermeer Models: 6x6, 7x11, 9x15, 10x15, 16x20, 18x22, 20x22, 24x26, 24x33, 24x40, 40x40, 33x44, 36x50, 55x100, 80x100, 100x120, 120x180



Astec/Case Models: 2024, 3238, 6010, 6030

American Augers Models: DD6, DD10, DD220T, DD440, DD440T, DD625, DD1100, DD1100RS

Straightline Models: SL2020

Fly Cutter Reamer

Designed for use in: sand, soft soils and cobble

Options: carbide embedding

Ditch Witch Models: 1720, 1720M1, 2720, 2720M1, 3020M1, 4020, 4020M1, 7020, 8020, JT100

Vermeer Models: 6x6, 7x11, 9x15, 10x15, 16x20, 18x22, 20x22, 24x26, 24x33, 24x40, 40x40, 33x44, 36x50, 55x100, 80x100, 100x120, 120x180



Astec/Case Models: 2024, 3238, 6010, 6030

American Augers Models: DD6, DD10, DD220T, DD440, DD440T, DD625, DD1100, DD1100RS

Straightline Models: SL2020

Fly Cutter II Reamer

Designed for use in: dry packed clays, compacted soils

Options: nozzle diameter; teeth; packing ring length; pulling eye or thread connection on product end of reamers

Ditch Witch Models: 1720, 1720M1, 2720, 2720M1, 3020M1, 4020, 4020M1, 7020, 8020, JT100

Vermeer Models: 6x6, 7x11, 9x15, 10x15, 16x20, 18x22, 20x22, 24x26, 24x33, 24x40, 40x40, 33x44, 36x50, 55x100, 80x100, 100x120, 120x180

Astec/Case Models: 2024, 3238, 6010, 6030

American Augers Models: DD6, DD10, DD220T, DD440, DD440T, DD625, DD1100, DD1100RS

Straightline Models: SL2020



Hollow Fluted Reamer

Designed for use in: sand, loamy sand/clay, compacted soils

Options: nozzles and nozzle diameter; teeth; length of coned body (gradual-tapered body for tough conditions); pulling eye, thread connection, or built-in swivel on product end of reamer

Ditch Witch Models: JT520, JT5, 920, 921, 922, 1220, 1720, 1720M1, 2720

Vermeer Models: 6x6, 7x11, 9x15, 10x15, 16x20, 18x22, 20x22, 24x26, 24x33, 24x40, 40x40, 33x44, 36x50, 55x100, 80x100, 100x120, 120x180

Astec/Case Models: 2024, 3238, 6010, 6030

American Augers Models: DD6, DD10, DD220T, DD440, DD440T, DD625, DD1100, DD1100RS

Straightline Models: SL2020



Packer Reamer

Designed for use in: sand, soft soils, cobble and hard-pan

Options: customized extra long taper; carbide embedding in place of hard facing

Ditch Witch Models: 920, 921, 922, 1220, 1720, 1720M1, 2720

Vermeer Models: 6x6, 7x11, 9x15, 10x15, 16x20, 18x22, 20x22, 24x26, 24x33, 24x40, 40x40, 33x44, 36x50, 55x100, 80x100, 100x120, 120x180

Astec/Case Models: 2024, 3238, 6010, 6030

American Augers Models: DD6, DD10, DD220T, DD440, DD440T, DD625, DD1100, DD1100RS

Straightline Models: SL2020



Roller Cone Hole Opener

Designed for your toughest rock jobs! They will increase your production rates and reduce wear on your drill rigs. We will manufacture your reamer with new or used bits and tungsten carbide inserts (TCI) or mill tooth (MT) cutters.



Designed for use in: rock, cobble and caliche

Options: mill tooth or tungsten carbide inserts; re-runs or new; barrel on back

Ditch Witch Models: 1720, 1720M1, 2720, 2720M1, 3020M1, 4020, 4020M1, 7020, 8020, JT100

Vermeer Models: 18x22, 20x22, 24x26, 24x33, 24x40, 33x44, 40x44, 36x50, 55x100, 80x100, 100x120, 120x180

Astec/Case Models: 2024, 3238, 6010, 6030

American Augers Models: DD6, DD10, DD220T, DD440, DD440T, DD625, DD1100, DD1100RS

Straightline Models: SL2020

Solid Fluted Reamer

Designed for use in: sand, soft soils and cobble

Options: built-in swivel or static lug bolt-on plate



Ditch Witch Models: 1720, 1720M1, 2720, 2720M1, 3020M1, 4020, 4020M1, 7020, 8020, JT100

Vermeer Models: 18x22, 20x22, 24x26, 24x33, 24x40, 33x44, 40x44, 36x50, 55x100, 80x100, 100x120, 120x180

Astec/Case Models: 2024, 3238, 6010, 6030

American Augers Models: DD6, DD10, DD220T, DD440, DD440T, DD625, DD1100, DD1100RS

Straightline Models: SL2020

Turbo Reamer

Designed for use in: clay

Options: built-in swivel



Ditch Witch Models: 920, 921, 922, 1220, 1720, 1720M1, 2720

Vermeer Models: 6x6, 7x11, 9x15, 10x15, 16x20, 18x22, 20x22, 24x26, 24x33, 24x40, 40x40, 33x44, 36x50, 55x100, 80x100, 100x120, 120x180

Astec/Case Models: 2024, 3238, 6010, 6030

American Augers Models: DD6, DD10, DD220T, DD440, DD440T, DD625, DD1100, DD1100RS

Straightline Models: SL2020

Winged Cutter Reamer

Designed for use in: sand, clay, light shale and caliche

Options: jets in blades

Ditch Witch Models: 920, 921, 922, 1220, 1720, 1720M1, 2720

Vermeer Models: 6x6, 7x11, 9x15, 10x15, 16x20, 18x22, 20x22, 24x26, 24x33, 24x40, 40x40, 33x44, 36x50, 55x100, 80x100, 100x120, 120x180

Astec/Case Models: 2024, 3238, 6010, 6030

American Augers Models: DD6, DD10, DD220T, DD440, DD440T, DD625, DD1100, DD1100RS

Straightline Models: SL2020



Wolverine Reamer

Designed for use in: sand, cobble and hard-pan

Ditch Witch Models: 1720, 1720M1, 2720, 2720M1, 3020M1, 4020, 4020M1, 7020, 8020, JT100

Vermeer Models: 18x22, 20x22, 24x26, 24x33, 24x40, 33x44, 40x44, 36x50, 55x100, 80x100, 100x120, 120x180

Astec/Case Models: 2024, 3238, 6010, 6030

American Augers Models: DD6, DD10, DD220T, DD440, DD440T, DD625, DD1100, DD1100RS

Straightline Models: SL2020



Drive Chucks and Sub Savers

Install a new drive chuck with every new rack of rods. This will help lengthen the life of your rods.

Ditch Witch Style Drive Chucks and Sub Savers

- Drive Chucks and Sub Savers available for the following models: 520, 920, 922, 922 (coarse thread), 1220, 1720, 2020M1, 2720, 3020M1, 4020, 4020M1 and JT100.

Vermeer Style Drive Chucks and Sub Savers

- Drive Chucks and Sub Savers available for the following models: D6X6, D7X11, D10X15, D16X20, D18X22, D20X22, D24X26, D24X40, D33X44, D40X40, D50X100, and D80X100.



Case, Davis, ASTEC Style Drive Chucks and Sub Savers

- Drive Chucks and Sub Savers available for the following models: Case 6010 and 6030.

Jaw Dies and Inserts

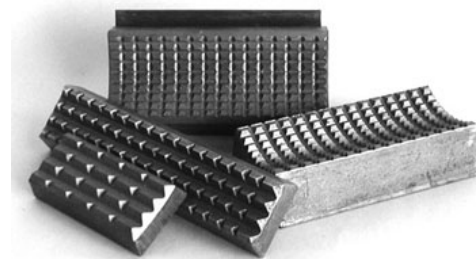
Keep jaw teeth sharp to prevent slippage with new dies and inserts.

Ditch Witch Style Inserts

- Jaw Dies and Inserts available for the following models: 922, 1220, 2020, 2720M1, 3020M1, 7020, 8020, and JT100

Vermeer Style Drive Chucks and Sub Savers

- Jaw Dies and Inserts available for the following models: D7X11, D16X20, D20X22, D24X26, D24X40, D33X44, and D80X100.



Carbide Replacement Bits

GUS carries a number of carbide replacement bits:

BD TT1065-50 X-Small Shark Tooth .735" x .50" x 1.065"

BD TT1250-50 Shark Tooth Small Cutter Tooth for Backreamers "Low Profile" 1.00" x .50" x 1.250"

BD TT1500-47 Medium Kodiak 1.435" x .720" x 1.5"

BD TT1654 Shark Tooth Medium Cutter Tooth for Backreamers 1.306" x .50" x 1.80"

BD TT200 Shark Tooth Large Cutter Tooth for Backreamers 2.360" x .730" x 2.205"

BD TT216 Shark Tooth Large .875" Carbide

BD TT300-250 Kodiak Carbide Bit 1.250" x .875" x 1.250"

BD TT3STEP 3-Step Cutter Bit

BD TT400-01 Carbide Bit Small Bevel Cut Conical Bit for Backreamers

BD TT400-23 Carbide Bit Large Bevel Cut Conical Bit for Backreamers

Rod Wipers, Split Rod Wipers and Guide Blocks

Ditch Witch Style Rod Wipers and Guide Blocks

- Rod Wipers available for the following models: 520, 820, 920, 922, 1220, 1720, 2020, 2720, 3020, 4020, and 7020.
- Split Rod Wipers available for the following models: 922, 1220, 1720, 2020, 27M1 and 3020.
- Guide Blocks available for the following models: 922, 1220, 2020, and 3020.



Vermeer Style Rod Wipers

- Rod Wipers available for the following models: D7X11, D10X15, D12x20, D16X20, D18X22, D24X26, D24X40, D33X44, D50X100, and D80X100.

Case Style Rod Wipers

- Rod Wipers available for the following model: D-6.

Rubber Tracks

Ditch Witch Style Rubber Tracks

- Rubber Tracks available for the following models: JT5, 520, 820, 920, 921, 922, 1220, 1720, 2020, 2720, 2720M1, 3020M1, 7020, 8020 and JT100.

Vermeer Style Rubber Tracks

- Rubber Tracks available for the following models: D7X11, D10X15, and D16X20.



Swivels, Pulling Eyes and Pulling Harnesses

Swivels

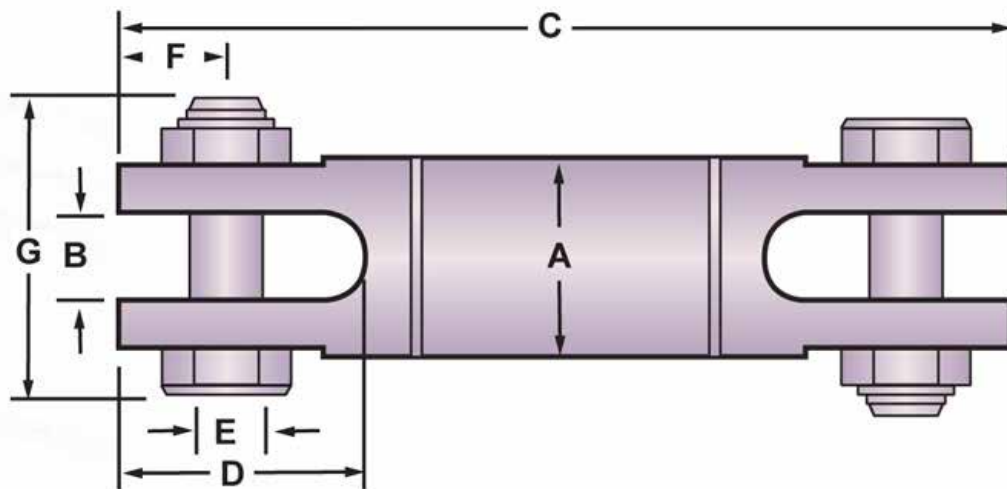
819 D.Drill® Directional Drilling Swivels

Designed specifically for directional drilling, the Condux 819 D.Drill Swivels prevent boring equipments' rotational torque from interfering with the product (cable or conduit) being pulled. The D.Drill Swivels are greasable and double sealed to keep contaminants out. Clevis pins with hex nuts allow for installation and removal from either side of the swivel. There is a 90 day warranty on the directional drill swivels.



CAUTION: To be used for directional drilling only.

CAUTION: Condux requires the use of a calcium-based lubricant only. Other lubricants may have adverse reactions when exposed to bentonite products. Condux requires that the swivels be flushed with grease after each use to purge any contaminants that may have penetrated past the seals into the swivel while boring.



Part Number	Working Load		A (in)	B (in)	C (in)	D (in)	E (in)	F (in)	G (in)
	Tension (lbs)	Compression (lbs)							
08190016	8,500	2,800	1-5/8	.63	6.85	1.59	.56	.78	2.36
08190020	10,000	3,300	2	.75	7.83	1.81	.63	.75	2.89
08190025	20,000	6,600	2-1/2	1.00	10.93	2.84	.88	1.25	3.67
08190030	30,000	10,000	3	1.31	12.75	3.56	1.13	1.37	4.50
08190040	45,000	15,000	4	1.63	15.25	4.00	1.25	1.84	5.58
08190045	60,000	20,000	4-5/8	1.75	17.48	4.62	1.50	2.13	6.31
08190060	90,000	30,000	6	2.00	18.27	4.50	1.75	2.18	6.59
08190080	120,000	40,000	8	2.25	21.71	5.25	2.00	2.50	8.25

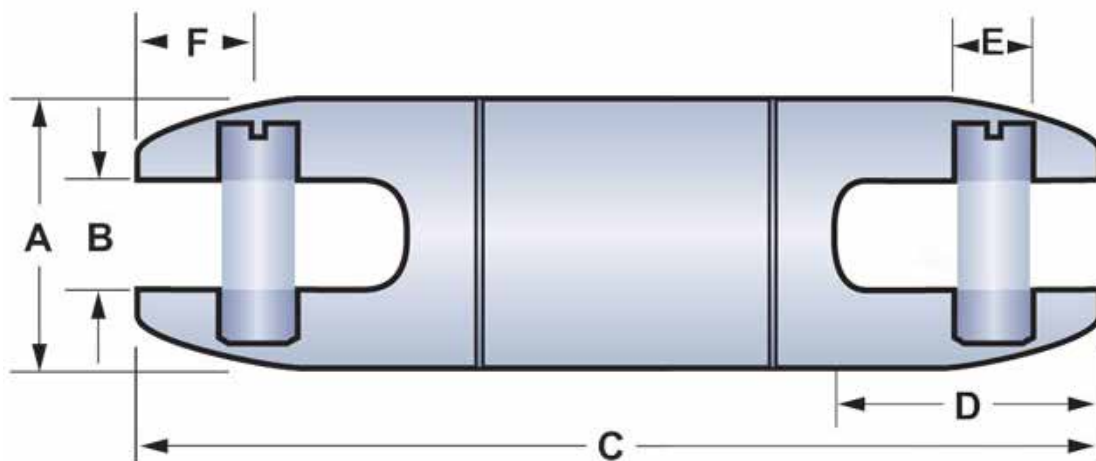
Note: We also carry Clevis Pin and Locking Nut replacement parts for the 819 D.Drill Directional Drilling Swivels.

400 D.Drill® Directional Drilling Swivels

Designed specifically for directional drilling, the Condux 400D Drill Swivels prevent boring equipments' rotational torque from interfering with the product (cable or conduit) being pulled. The D.Drill Swivels are greasable and double sealed to keep contaminants out. There is a 90 day warranty on the directional drill swivels.

CAUTION: To be used for directional drilling and underground cable installation only.

CAUTION: Condux requires the use of a calcium-based lubricant only. Other lubricants may have adverse reactions when exposed to bentonite products. Condux requires that the swivels be flushed with grease after each use to purge any contaminants that may have penetrated past the seals into the swivel while boring.



Part Number	Working Load		A (in)	B (in)	C (in)	D (in)	E (in)	F (in)
	Tension (lbs)	Compression (lbs)						
08190408	1,800	595	7/8	.38	4.83	1.03	.31	.53
08190412	4,000	1,300	1-1/4	.56	6.57	1.34	.37	.59
08190416	8,500	2,800	1-5/8	.63	7.22	1.59	.56	.78
08190420	10,000	3,300	2	.75	8.29	1.77	.63	.71
08190425	20,000	6,600	2-1/2	1.00	11.44	2.79	.88	1.23
08190430	30,000	10,000	3	1.31	13.27	3.56	1.13	1.37

Note: We also carry Clevis Pin and Locking Nut replacement parts for the 400 D.Drill Directional Drilling Swivels.

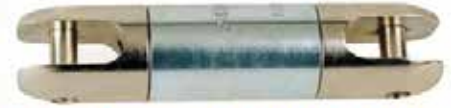
Break-Away D.Drill® Swivels for Directional Drilling

Avoid overstressing cable or conduit being pulled in during directional drilling operations. The Condux Break-Away Swivels for directional drilling are designed exclusively to provide both the swivel and the break link for product pull-back. Eliminate the use of two or more components and shorten the gap between the reamer and pulling eye. No need to use “wear link” pipe sections or wire when using the Condux Break-Away Swivel.

Six different diameter swivels are available to accommodate various pulling needs. Break loads range from 1,200 lbs. to 25,000 lbs. and are designed to separate at ±10% of their rated break load. Order Replacement Pins as needed.

NOTE: D.Drill Swivels come with a 90 day limited warranty.

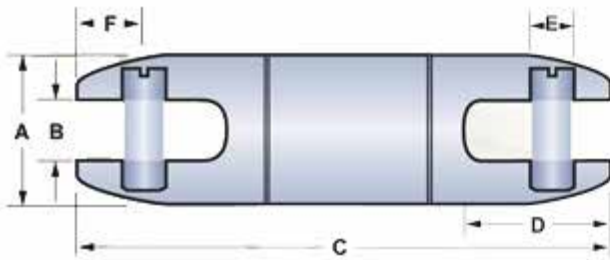
WARNING: These swivels are to be used while Directional Drilling only--severe personal injury could result if used with rope or steel winch lines in cable pulling applications.



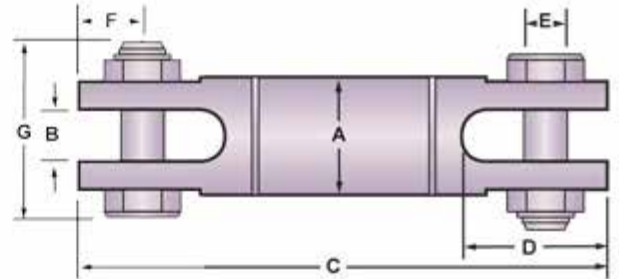
Break-Away D.Drill Swivel 1-1/4"-1-3/8"



Break-Away D.Drill Swivel 1-5/8"-3"



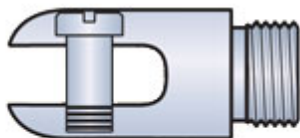
Use these dimensions when ordering the 1-1/4" and the 1-3/8" swivels.



Use these dimensions when ordering the 1-5/8", the 2", the 2-1/2" and the 3" swivels.

A (in)	B (in)	C (in)	D (in)	E (in)	F (in)	G (in)
1-1/4"	.56	5.44	1.34	.37	.59	--
1-3/8"	.56	5.25	1.31	.44	.56	--
1-5/8"	.63	6.85	1.59	.56	.78	2.36
2	.75	7.83	1.81	.63	.75	2.89
2-1/2"	1.00	10.93	2.84	.88	1.25	3.67
3	1.31	12.75	3.56	1.13	1.37	4.50

Note: We also carry Replacement Break Load Pins for the Break-Away D.Drill Swivels.



Externally Threaded Head



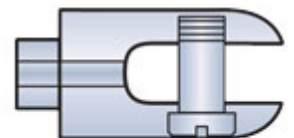
Break Pin



Bearings



Body



Internally Threaded Head

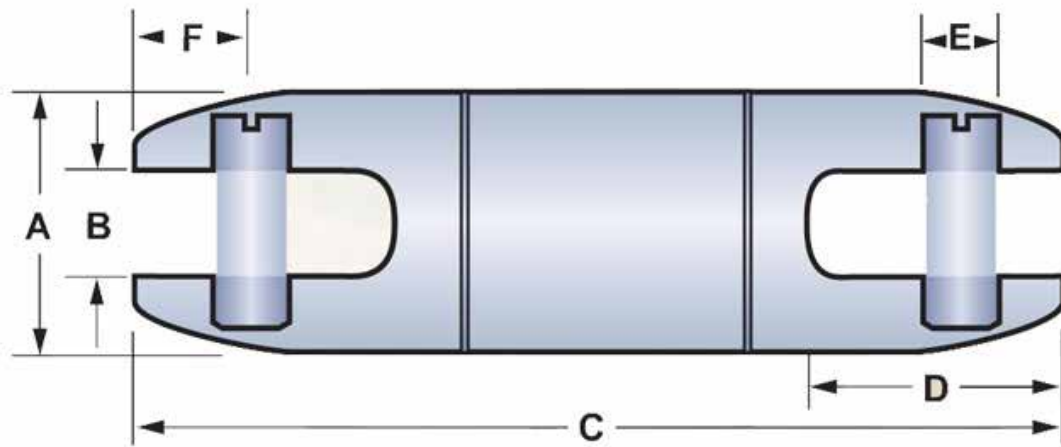
7/8" Break-Away Swivel for Directional Drilling

Avoid overstressing cable or conduit being pulled in during directional drilling operations. The Condux 7/8" Break-Away Swivel for directional drilling are designed exclusively to provide **both** the swivel and the break link for product pull-back. Eliminate the use of two or more components and shorten the gap between the reamer and pulling eye. No need to use "wear link" pipe sections or wire when using the 7/8" Condux Break-Away Swivel.

This swivel is available to accommodate various pulling needs. Break loads range from 150 lbs. to 1,800 lbs. and are designed to separate at $\pm 10\%$ of their rated break load. Order Replacement Pins as needed.

NOTE: D.Drill Swivels come with a 90 day limited warranty.

***WARNING:** This swivel is to be used while Directional Drilling only--severe personal injury could result if used with rope or steel winch lines in cable pulling applications.



7/8" Break-Away Swivel Dimensions

A (in)	B (in)	C (in)	D (in)	E (in)	F (in)
7/8"	.38	4.83	1.03	.31	.53

Note: We also carry Replacement Pins for the 7/8" Break-Away Swivels.

DUB-LITE® 00503 Series Type 2—Clevis/Clevis

The swivels feature a multiple sealing system which is progressive in design and application. Swivels 00503-204 to 00503-215 include a side mounted grease nipple for easy access without having to remove the clevis pin. Greasing should be done after each use.

The DUB-Lite swivels utilize angular contact bearings for both pullback and pushback functions. All mechanical components are manufactured from high strength alloy steel and are designed to withstand a straight tensile load of at least 3 times the safe working load. The simplicity of this swivel allows field re-building, and a re-build kit comprised of bearings and seals is available.

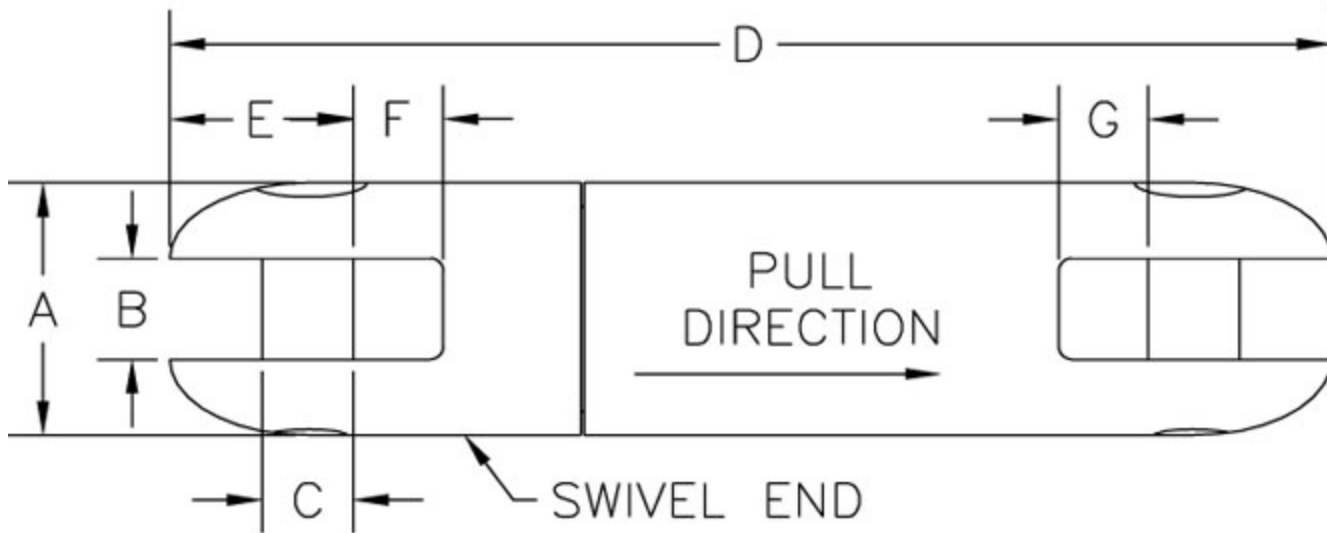
The DCD Clevis Pin is specifically designed, machined and heat treated to provide the required strength and stability of the clevis. The clevis pins are hardened steel and are available as replacement kits. These clevis pins must not be replaced with simple hexagon bolts.

The clevis/clevis style of swivel is the most common type and is the best for distributing side loads applied on the swivel due to its ability to pivot at either end. It does not allow the operator to push back without proper care and attention or the swivel may fold back on itself. Before rotation is re-commenced, the line must be pulled straight or damage may occur to the swivel, as well as potential harm to nearby operators.

DCD recommends that some type of restrictor be used to prevent the swivel from pivoting at the front or reamer end. For swivels 00503-204 to 00503-215, the clevis is deeper at the leading end to allow the fool-proof design of a lug that would prevent more than minimal movement of the swivel away from the axis of rotation and also ensures the swivel is pulled in the right direction.

It is our recommendation to always select a swivel larger than the machine capacity.





Part Number	3:1 Safe Working Load (lbs)	Ultimate Load (lbs)	A	B	C	D	E	F	G
00503-204	8,500	25,500	2"	3/4"	11/16"	8-3/4"	1-3/8"	5/8"	3/4"
00503-205	10,000	30,000	2-1/4"	7/8"	3/4"	9-5/8"	1-1/2"	3/4"	7/8"
00503-208	15,000	45,000	2-1/2"	1"	7/8"	11-1/4"	1-3/4"	7/8"	1"
00503-210	20,000	60,000	2-1/2"	1"	7/8"	11-7/8"	1-3/4"	7/8"	1"
00503-215	30,000	90,000	3"	1-5/16"	1-1/8"	14"	2-1/4"	1-1/8"	1-1/4"
00503-220	40,000	120,000	4-3/4"	1-3/4"	1-1/8"	16-1/2"	2-1/16"	1-7/16"	n/a
00503-230	60,000	180,000	5-3/4"	1-3/4"	1-3/8"	18-1/4"	2-1/2"	1-7/16"	n/a
00503-245	90,000	270,000	6"	1-3/4"	1-3/8"	19-3/8"	2-1/2"	1-7/16"	n/a

Pulling Eyes

PE & PVC Pulling Eyes Sleeved and Non-Sleeved

Condux PE and PVC Pulling Eyes provide optimum gripping power and a watertight design. The watertight pulling eyes feature a multiple o-ring configuration, an extremely rigid center rod to prevent bending and a steel tapered lead cone with the same OD as the conduit. These design features protect the outer leading edge of the conduit and form a watertight seal. Condux PE and PVC Pulling Eyes also feature split gripping segments with aggressive gripping threads coupled with a steel expander plug that better grips the full range of conduit IDs.



Installation of the PE and PVC Pulling Eyes simply requires the leading eye to be tightened. The pulling eyes come standard with attachment eyes at both ends for connecting rope or steel lines. Pull-out strengths exceed the tensile capacity of the conduit.

NOTE: PE and PVC Pulling Eyes come with a 90 day limited warranty.

PE and PVC Pulling Eyes Non-Sleeved

Part Number	Size (in)	Length (in)	Conduit ID		Lead Cone OD (in)	Duct Type	Nom. Duct ID (In)
			Min.	Max			
08220020	2	8.18	1.88	2.15	2.83	2.0 SDR 11.0	1.92
						2.0 SCH80	1.94
						2.0 SDR 13.5	2.00
						2.0 SDR 15.5	2.05
						2.0 SCH 40	2.07
						2.0 SDR 17.0	2.08
08220030	3	11.89	2.69	3.13	3.50	3.0 SDR 11.0	2.83
						3.0 SCH 80	2.90
						3.0 SDR 13.5	2.95
						3.0 SDR 15.5	3.02
						3.0 SDR 17.0	3.06
						3.0 SCH 40	3.07
08220611	4	14.11	3.50	4.20	4.81	4.0 SDR 7.0	4.026
						4.0 SDR 9.0	4.026
						4.0 SDR 11.5	4.026
						4.0 SDR 15.0	4.026

08220050	5	18.45	4.25	5.06	5.56	5.0 SDR 11.0	4.49
						5.0 SDR 13.5	4.69
						5.0 SDR 15.5	4.80
						5.0 SDR 80	4.81
						5.0 SDR 17.0	4.87
						5.0 SDR 21.0	5.00
						5.0 SCH 40	5.05
08220060	6	19.6	5.06	6	6.63	6.0 SDR 11.0	5.35
						6.0 SDR 13.5	5.58
						6.0 SDR 15.5	5.72
						6.0 SCH 80	5.76
						6.0 SDR 17.0	5.80
						6.0 SDR 21.0	5.96

PE and PVC Pulling Eyes in Sleeve

Part Number	Size (in)	Length (in)	Conduit ID			Duct Type	Nom. Duct ID (In)
			Min.	Max	Lead Cone OD (in)		
08220612	1.00	6.23	1.00	1.25	1.415	1.00 SDR 11.0	1.075
						1.00 SDR 13.5	1.121
08220600	1.25	6.23	1.25	1.50	1.76	1.25 SDR 11.0	1.33
						1.25 SCH 40	1.38
						1.25 SDR 13.5	1.39
						1.25 SDR 15.5	1.43
						1.25 SDR 17.0	1.44
						1.25 SDR 21.0	1.50
08220602	2	8.18	1.88	2.15	2.45	2.0 SDR 11.0	1.92
						2.0 SDR 13.5	2.00
						2.0 SDR 15.5	2.05
						2.0 SCH 40	2.07
						2.0 SDR 17.0	2.08
						2.0 SDR 21.0	2.15
08220609	2.5	8.80	2.31	2.56	3.01	2.5 SDR 11.0	2.32
						2.5 SDR 13.5	2.42
						2.5 SCH 40	2.47
						2.5 SDR 15.5	2.49
						2.5 SDR 17.0	2.51
08220603	3	11.89	2.69	3.13	4.63	3.0 SDR 11.0	2.83
						3.0 SDR 13.5	2.95
						3.0 SDR 15.5	3.02
						3.0 SDR 17.0	3.06
						3.0 SCH 40	3.07

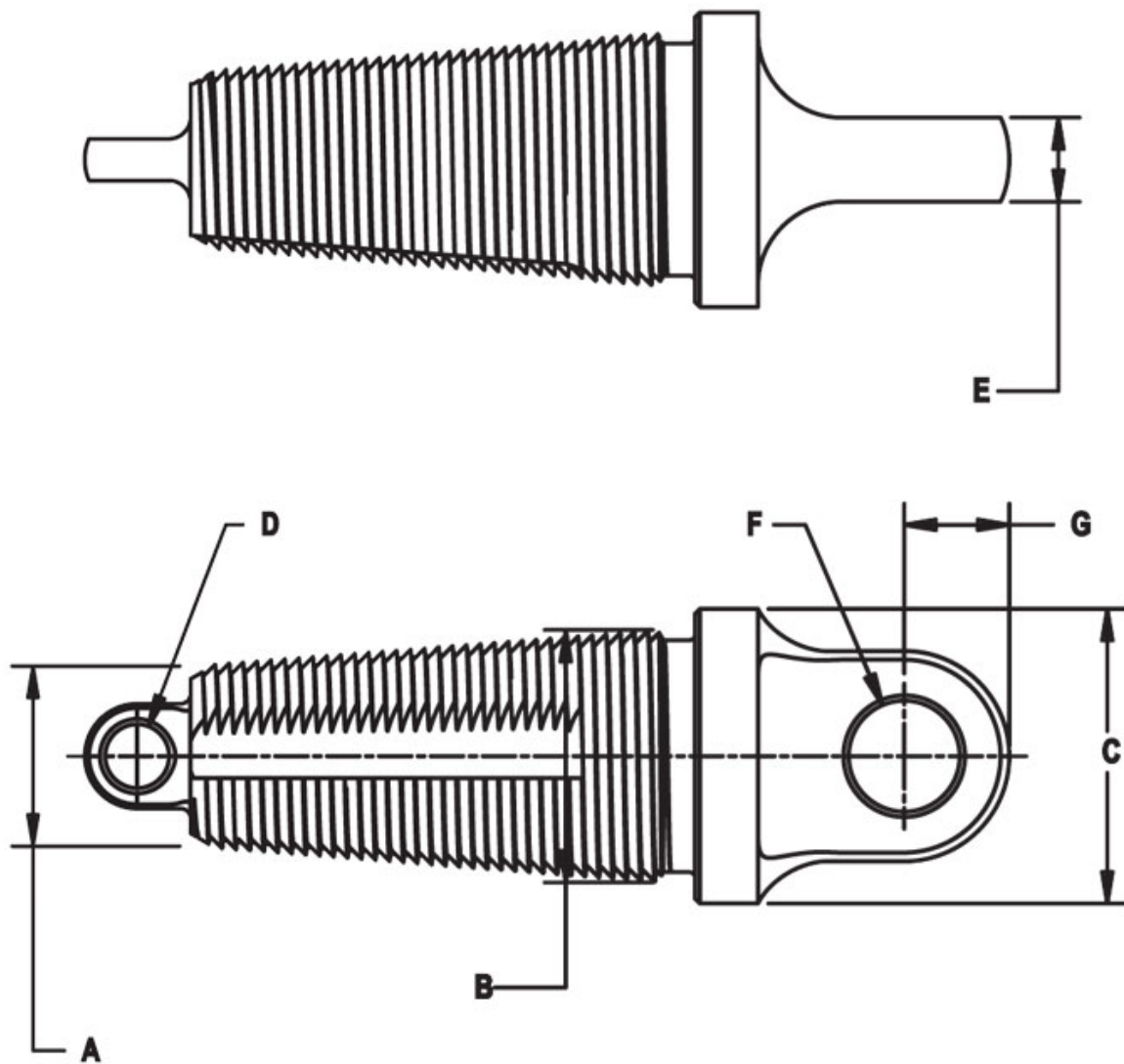
08220604	4	14.11	3.50	4.06	4.63	4.0 SDR 11.0	3.63
						4.0 SDR 13.5	3.79
						4.0 SCH 80	3.83
						4.0 SDR 15.5	3.89
						4.0 SDR 17.0	3.94
						4.0 SCH 40	4.03
08220605	5	18.45	4.25	5.06	5.63	5.0 SDR 11.0	4.49
						5.0 SDR 13.5	4.69
						5.0 SDR 15.5	4.80
						5.0 SDR 17.0	4.87
						5.0 SDR 21.0	5.00
						5.0 SCH 40	5.05
08220606	6	19.60	5.06	6.00	6.76	6.0 SDR 11.0	5.35
						6.0 SDR 13.5	5.58
						6.0 SDR 15.5	5.72
						6.0 SDR 17.0	5.80
						6.0 SDR 21.0	5.96
						8.0 SDR 11.0	6.96
08220608	8	21.53	6.63	7.69	8.84	8.0 SDR 13.5	7.27
						8.0 SDR 15.5	7.45
						8.0 SDR 17.0	7.55

Fixed Head Innerduct Pulling Eyes

Tapered buttress threads thread into the innerduct for maximum pulling strength. These eyes connect directly to a Condux swivel. When properly sized and installed, these eyes will not pull out of innerduct until the pulling tensions have greatly exceeded the maximum pulling tensions recommended by the innerduct manufacturers.

NOTE: To determine correct pulling eye size, obtain the actual innerduct inside diameter (ID). The ID measurement must be greater than dimension A and smaller than dimension B (see diagram to the right).



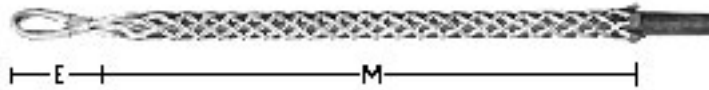


Part Number	Nominal Size (in)	Innerduct ID Range (in) (A-B)	Max OD (C)	Hole Dia. (in) (D)	Tang Thickness (E)	Tang Hole Diameter (F)	Tang Hole Location (G)
08914110	3/4	.71-.87	1.25	.25	.38	.50	.50
08914120	1	.93-1.06	1.38	.25	.38	.50	.50
08914130	1-1/4	1.06-1.43	1.75	.38	.50	.66	.63
08914140	1-1/2	1.37-1.68	2.00	.38	.50	.66	.63
08914150	1-3/4	1.68-1.8	2.25	.38	.50	.66	.75
08914160	2	1.93-2.1	2.50	.38	.50	.81	.75

Pull Grips, Pulling Harnesses and Eye to Eye Connectors

Standard Pulling Grips

Pulling Grips are manufactured of Hi-Fatigue plastic coated Aircraft Strand Steel cable in various weave designs. Recommended wherever high strength and small size are required. Patented pulling eye is flexible and stress relieving.



Part Number	Size	Work Load (lbs)	Approx. Break Strength (lbs)	Weight	Weave	Mesh Length (M) (in)	Eye (e) (in)
GUS ADW18	3/4"-1-1/4"	1,000	3,000	5-1/2 oz	Single	18	3
GUS ADW24	3/4"-1-1/4"	1,000	3,000	5-1/2 oz	Single	24	3
GUS BTW26	1-1/4"-2"	2,500	7,500	1 lb 1 oz	Triple	26	3-1/4
GUS BTW32	1-1/4"-2"	3,500	10,500	1 lb 1 oz	Triple	32	3-1/4
GUS CTW32	2"-2-3/4"	3,500	10,500	1 lb 4 oz	Triple	32	3-1/2
GUS DTW38	2-3/4"-3-1/2"	4,500	13,500	1 lb 12 oz	Triple	38	3-3/4
GUS ETW46	3-1/2"-4-1/4"	5,500	16,500	2 lbs 5 oz	Triple	46	4
GUS FTW58	4-1/4"-4-7/8"	6,000	18,000	2 lbs 5 oz	Triple	58	4

Flex-Eye Heavy-Duty Grips

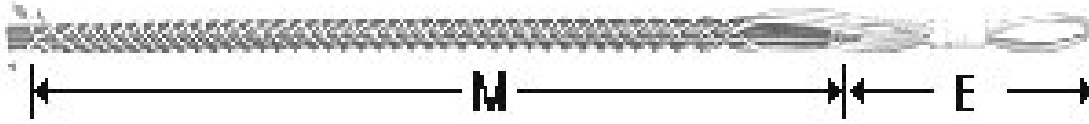
Here is a powerful grip for pulling big conductors and will travel smoothly through pulleys. It is made of highest quality, flexible aircraft strand steel, integrated with a new flexible eye. The eye itself is composed of braided strands (rather than being rigid) to give it maximum flexibility in going around angle pulls or through small openings. Strands of the grip are retained at the head by a stainless steel spring, eliminating a rigid compression sleeve.



Part Number	Size Range	Approx. Break Strength (lbs)	Working Load	Eye (in)	Mesh (in)
GUS HDFE1	1/4"-1/2"	3,700	1,200	4	22
GUS HDFE2	1/2"-7/8"	10,000	2,400	6	42
GUS HDFE3	7/8"-1-3/8"	28,000	5,700	7	48
GUS HDFE5	2"-2-3/4"	49,000	11,500	7	52
GUS HDFE6	2-3/4"-3-1/2"	50,300	13,500	7	54

Standard Fiber Optic Pulling Grips

This grip is especially designed for long pulls. It features a continuous single weave design that provides an even pull from the receiving end through the pulling eye. The grip is fabricated of coated galvanized aircraft strand for long life and safety. Each grip has a 24" Mesh length for maximum gripping surface.



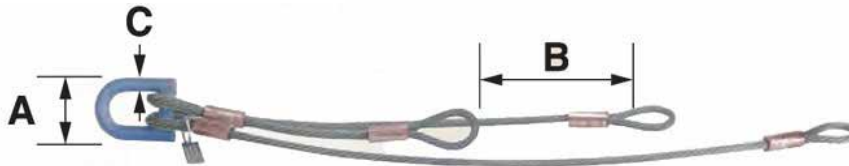
Part Number	Grip Size	M (in)	E (in)	Working load (lbs)	Breaking Strength (lbs)
GUS JL50-FO-CM	1/2"-5/8"	24	8	750	1,500
GUS JL62-FO-CM	5/8"-3/4"	24	8	750	1,500

Multiple Pulling Harnesses

Multiple Pulling Harnesses allows staggered attachment to cable or innerduct when pulling through conduit systems or during directional drilling pullback operations.



Other harness combinations available upon request. Contact our multiple pulling harness experts and we will customize a harness for your specific needs.



Part Number	Description	Working Load (lbs)	Working Load Combined (lbs)	Max Width (A)	Separation Between Legs (B)	Lead Ring Dia. (C)
08549200	3 Way 1/8" Cable	550	1,600	2.25	14	.37
08549230	3 Way 1/4" Cable	1,400	2,900	2.00	14	.37
08549325	4 Way 1/4" Cable	1,400	4,200	2.00	14	.37
08569910	5 Way 1/4" Cable	1,400	4,200	2.00	14	.37
08549326	6 Way 1/4" Cable	1,400	4,200	2.00	14	.37
08549333	3 Way 3/8" Cable	4,800	9,000	2.63	10	.62
08549329	4 Way 3/8" Cable	4,800	9,000	2.63	10	.62
08549330	10 Way 3/8" Cable	4,800	6,000	4.50	6	.75
08549334	12 Way 3/8" Cable	4,800	6,000	4.50	6	.75
08549331	2 Way 1/2" Cable	7,000	10,000	2.50	12	.50
08549332	3 Way 1/2" Cable	7,000	15,000	3.75	12	.87
08549340	4 Way 1/2" Cable	7,000	15,000	3.75	12	.87

NOTE: 10 & 12 Way 3/8" harnesses only have a single stagger. All other harnesses are sequentially staggered.

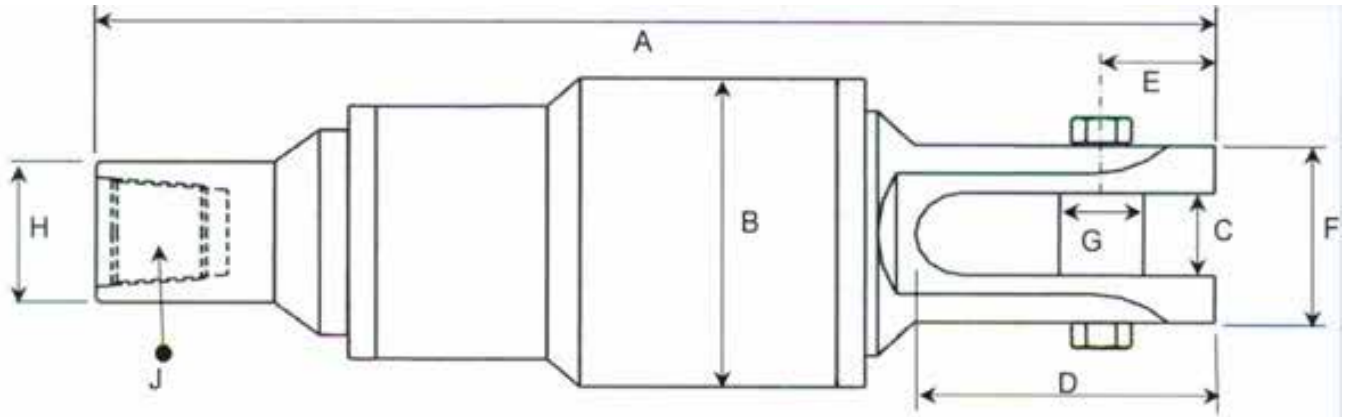
Eye to Eye Connectors

Part Number	Size (in)	Working load (lbs)
08050300	3/8	2,200
08050500	1/2	3,600
08050501	5/8	5,200



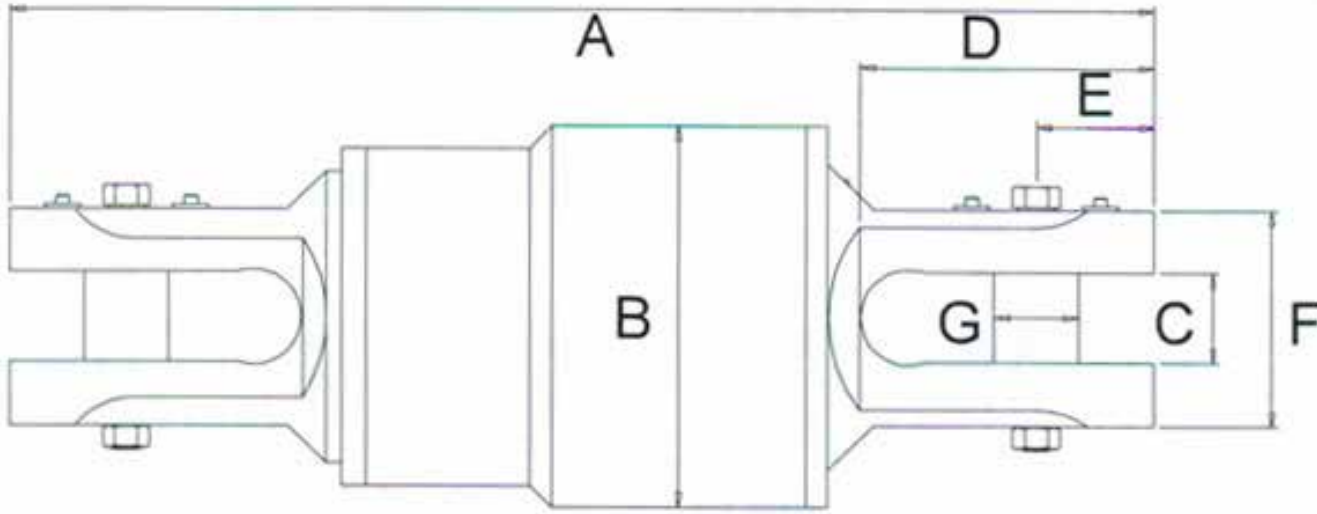
Big Rig™ Pullback Swivels

Box-Clevis Connections



Part Number	Size (US Tons)	A (in)	B (in)	C (in)	D (in)	E (in)	F (in)	G (in)	H (in)	J (in)	Bearing
10-044	44	24.02	6.50	2.13	6.30	2.44	4.96	1.73	4.72	3-1/2 IF	29412
10-058	58	28.39	7.28	2.76	7.01	2.57	5.51	2.13	6.25	4-1/2 IF	29414
10-083	83	33.19	8.86	3.27	8.46	3.56	6.69	2.48	6.25	4-1/2 IF	29417
10-110	110	35.39	10.24	3.27	8.39	3.52	6.69	2.48	6.25	4-1/2 IF	29420
10-154	154	38.50	12.40	3.50	9.41	4.02	7.09	2.98	6.25	4-1/2 IF	29424
10-210	210	46.81	14.96	4.02	11.54	4.73	8.66	3.50	6.86	5-1/2 IF	29430
10-265	265	51.30	16.93	4.02	11.57	4.72	9.45	3.50	9.00	6-5/8 IF	29434
10-320	320	56.06	18.50	5.00	14.33	6.26	11.02	4.49	9.00	6-5/8 IF	29438
10-382	382	56.54	20.86	5.00	15.67	6.26	11.81	4.49	8.99	6-5/8 IF	29448
10-550	550	64.65	23.62	6.14	12.99	7.48	12.68	5.91	11.02	6-5/8 IF	29456

Clevis-Clevis Connections



Part Number	Size (US Tons)	A (in)	B (in)	C (in)	D (in)	E (in)	F (in)	G (in)	Bearing
10-044B	44	25.35	6.50	2.13	6.30	2.44	4.96	1.73	29412
10-058B	58	TBC	7.28	2.76	7.01	2.57	5.51	2.13	29414
10-083B	83	TBC	8.86	3.27	8.46	3.56	6.69	2.48	29417
10-110B	110	36.61	10.24	3.27	8.39	3.52	6.69	2.48	29420
10-154B	154	40.63	12.40	3.50	9.41	4.02	7.09	2.98	29424
10-210B	210	TBC	14.96	4.02	11.54	4.73	8.66	3.50	29430
10-265B	265	55.91	16.93	4.02	11.57	4.72	9.45	3.50	29434
10-320B	320	TBC	18.50	5.00	14.33	6.26	11.02	4.49	29438
10-382B	382	56.54	20.86	5.00	15.67	6.26	11.81	4.49	29448
10-550B	550	TBC	23.62	6.14	12.99	7.48	12.68	5.91	29456

Bentonite and Drilling Fluids

HYDRAUL-EZ®

HYDRAUL-EZ is a high-yield, 200 mesh sodium bentonite with a special dry polymer additive. It is designed to maintain borehole integrity in horizontally drilled boreholes. HYDRAUL-EZ is certified to NSF/ANSI Standard 60, Drinking Water Treatment Chemicals—Health Effects.

SUPER GEL-X®

SUPER GEL-X is an easy mixing, high viscosity 200 bbl yield freshwater drilling fluid produced from the highest grade Wyoming sodium bentonite. SUPER GEL-X is certified to NSF/ANSI Standard 60, Drinking Water Treatment Chemicals—Health Effects.

INSTA-VIS™ PLUS Liquid Drilling Fluid Polymer

INSTA-VIS PLUS is a multi-functional liquid polymer designed to improve drilling efficiency in both horizontal and vertical drilled holes through its rapid field mixing, viscosity development, and clay and shale inhibition. INSTA-VIS PLUS is certified to NSF/ANSI Standard 60, Drinking Water Treatment Chemicals—Health Effects.

DRILL-TERGE™ Drilling Detergent/Wetting Agent

DRILL-TERGE is a liquid solution of nonionic surfactants formulated to increase detergency and wetting properties of drilling fluids.

REL-PAC® Natural Cellulosic Polymer

REL-PAC is a non-fermenting granular polymer designed for building a low solids drilling fluid with increased borehole stability. REL-PAC is a highly dispersible polymer, which prevents the formation of hard lumps or fish eyes, for maximum product efficiency.

SHORE PAC® Viscous Soil Stabilizing Polymer

SHORE PAC is an easy mixing, water soluble, polymer supplied as a granular powder. SHORE PAC is designed for preparation of viscous earth-reinforcing fluids or slurries for a variety of drilling, trenching, and walling applications in the geo-construction industry.



**SUPER PAC™ XTRA-LOW
Liquid Polyanionic Cellulosic Polymer**

SUPER PAC XTRA-LOW is a low viscosity, liquid multi-purpose polymer. SUPER PAC XTRA-LOW enhances the beneficial properties of bentonite and polymer drilling fluids.



SUPER THIN™ Drilling Fluid Thinner/Deflocculant

SUPER THIN is a highly concentrated additive engineered to reduce drilling fluid viscosity, assist in settling solids, and disperse the filter cake created by a bentonite drilling fluid. It offers immediate thinning action, reduces gel strength, and is more cost-effective than traditional thinners. SUPER THIN is certified to NSF/ANSI Standard 60, Drinking Water Treatment Chemicals -- Health Effects.

SUPER MUD 5 Gallon Drilling Polymer

A liquid polymer slurry which is primarily used as a viscosifying agent and as a soil stabilizer to prevent sloughing and/or collapse of a borehole. Super Mud is far easier to use than any bentonite. 5 Gallons of Super Mud is Equivalent to 1 Ton of Conventional Bentonite.

Super Mud Dry Environmentally Safe Soil Stabilizer

An environmentally safe synthetic soil stabilizer in granular form which is designed to be used in place of bentonite as drilling fluid. Super Mud Dry has the ability to quickly impart a very high viscosity (100 plus Marsh Funnel Viscosity) and creates fish-eye structures within its body to assist in plugging the walls of the borehole, which reduces fluid loss.

CLAY CUTTER™ Clay Inhibitor

CLAY CUTTER is a concentrated, non-hazardous, proprietary clay inhibitor that can be used with either polymer or bentonite drilling fluid systems. CLAY CUTTER is an ideal additive for HDD bores in reactive clay soils.

SUSPEND-IT™ Suspension Enhancer

SUSPEND-IT is an easy mixing biopolymer additive used to control drilling fluid rheology.

Drill Stem Grease

Eco-Safe Drilling Compound

Jet-Lube Eco-Safe Drilling Compound is biodegradable and environmentally safe. The product is nontoxic and in accordance with NSF Standard 61 and Annex G. One, two and five gallon containers available.



GUS Grease--Arctic Grade Copper Formula HDD Thread Lube

A no compromise thread compound unequalled in providing optimum protection for Directional Drilling donwhole applications. Provides essential protection in severe duty drilling environments where temperature, anti-wear and anti-galling properties are a must. Temperature Range: -65° F (-55° C) to 300° F (149° C). Lead free. Zinc free. Available in one and two gallon containers.



14 oz Cartridge Kopr-Kote Drill Stem Lubricant

KOPR-KOTE provides a shield against metal-to-metal contact, preventing seizure and corrosion. It fills irregularities and imperfections and resists welding, hardening, or setting. KOPR-KOTE provides low friction and cushions impact and shock loads. Low shear between particles reduces stick-slip, allowing quick disassembly with minimum wrench torque. It will not squeeze out of the threads, gum up, or wash off.





NIKAD Digital Battery Pak



F Series Charger for F5, F2, SE Receivers



F Series Lithium Battery for F5, F2, SE Receivers Aurora



HDD Power Cell 3.6v



Supercell Lithium Battery Silver

GIS



Aerial Installation

Underground Conduit Systems

DUCT AND Trencher Parts
OSP MATERIALS

Fiber Optic Cable Working Reel

Installation Hand Tools Trailers

HDPE/PVC/FRP/Resin Glass

Construction Safety Products

LOCATING
AND MARKING

Outside Plant Products

WAREHOUSE LOCATIONS

5158-G Kennedy Road | Forest Park, GA 30297 |
404-675-7999

1515 Monetary Lane | Carrollton, TX 75006 |
Suite 200 | **469-248-1164**

124 N Jim Thorpe Blvd | Prague, OK 74864 |
405-349-6767 |

1918 Gessner Drive | Unit 512 | Houston, TX 77080 |
713-299-2098 | Stocking Location Only

